

## EXPECTED OUTCOMES

Area of land restored	10,000 hectares
Area of landscapes under improved practices	60,000 hectares
Area of marine habitat under improved practices to benefit biodiversity	1,200 hectares
Greenhouse Gas Emissions	695,000 metric tons CO <sub>2</sub> e (lifetime direct) over the lifetime of the GHG mitigation projects); 100,000 metric tons CO <sub>2</sub> e (lifetime indirect)
Direct project beneficiaries disaggregated by gender as a co-benefit of GEF investment	16,800 of whom 9,240 are female (55%) and 7,560 are male



Empowered lives.  
Resilient nations.

## Seventh Operational Phase of GEF Small Grants Programme in India (SGP-OP7)

The Ministry of Environment, Forest and Climate Change (MoEF&CC), in collaboration with UNDP is implementing the GEF Seventh Operational Phase of the Small Grants Programme in India (SGP-OP7). The project aims to build capacities of local communities to take collective action for conservation and sustainable development, thereby generating global environmental benefits.



**teri** | THE ENERGY AND  
RESOURCES INSTITUTE  
Creating Innovative Solutions for a Sustainable Future National Host Institution

**The Energy and Resources Institute**  
6C, Darbari Seth Block, India Habitat Center Complex,  
Lodhi Road, New Delhi, Delhi 110003  
Tel: 71102110 or 24682100, Email- [sgpindia@teri.res.in](mailto:sgpindia@teri.res.in)

**teri** | THE ENERGY AND  
RESOURCES INSTITUTE  
Creating Innovative Solutions for a Sustainable Future

**SGP** The GEF  
Small Grants  
Programme

## MISSION

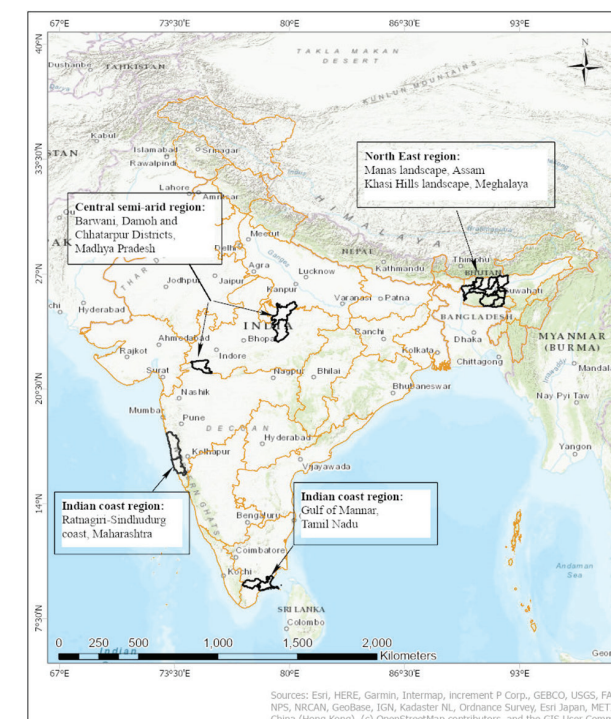
By providing financial and technical support to projects, the Seventh Operational Phase (OP7) of the GEF Small Grants Programme in India aims to enable communities and organizations in some of the most vulnerable and least developed areas of India. The project will take collective action through a participatory landscape planning and management approach aimed at enhancing socio-ecological resilience through innovative livelihood options producing local and global environmental benefits.



## SNAPSHOT

GEF Trust Fund-USD 4,474,886	National Executing Agency-Ministry of Environment, Forest and Climate Change
Co financing-USD 8,600,000	Implementing GEF Agency-United Nations Development Programme
2021-2026 (60 Months)	National Host Institution-The Energy and Resources Institute

## PROJECT LANDSCAPES



Region	State	Intervention Landscape District
Central semi-arid	Madhya Pradesh	Barwani
		Damoh
		Chhatarpur
Indian Coast	Maharashtra	Sindhudurg
		Ratnagiri
	Tamil Nadu	Virudhunagar
		Ramanathapuram
North East	Assam	Barpeta
		Baksa
		Udalguri
		Dhubri
	Meghalaya	Ri Bhoi
		West Khasi Hills
		East Khasi Hills

## THEMATIC AREAS

**Biodiversity Conservation** will promote the conservation & sustainable management of biodiversity and will promote equitable sharing of benefits arising from use of biological resources.

**Climate Change** projects will contribute through adaptation and mitigation actions by removing the cultural, institutional, technical and economic barriers. It will address strengthening the adaptation strategies among the communities to enhance the adaptive capacity of vulnerable communities, develop and implement initiatives around mitigation, capacity building, preparedness and post-disaster recovery, promote energy conservation, energy efficiency, adoption of renewable energy. Projects will align with the principles of circular economy in support of the Government's reform agenda on circular economy, natural resource efficiency, phasing out single use plastics for bringing sustainable lifestyle changes.

**Land Degradation** involves integrated land resource management with an emphasis on issues relating to desertification, deforestation, loss of soil fertility and enhanced livelihoods.



## PROJECT COMPONENTS

### Component 1: Resilient landscapes for sustainable development and global environmental benefits

Outcome 1.1: Globally significant biodiversity protected, and ecosystem services enhanced through improved community-led management practices and systems  
Outcome 1.2: Appropriate low emission, efficient and clean technologies and solutions adopted at scale

### Component 2: Enhancing sustainability through participatory governance and upscaling of best practices

Outcome 2.1: Community institutions strengthened for participatory governance to enhance socio-ecological resilience  
Outcome 2.2: Strengthened capacities and systems for upscaling of successful community initiatives

### Component 3: Monitoring and evaluation

Outcome 3.1: Sustainability of project results enhanced through participatory monitoring and evaluation